

Artists' Submission Pack



STOMP
round
Leicester

**20
25**

**Be part of
the HERD**



A fantastic opportunity to be part of **Stomp Round Leicester 2025**.
Make your creative contribution to this spectacular public art event
that Leicester will never forget!

A **Wild in Art** event brought
to you by **LOROS Hospice**



LOROS
Hospice Care for Leicester, Leicestershire & Rutland

Registered Charity No: 506120



Registered with
**FUNDRAISING
REGULATOR**

Make a BIG impression



Our diverse herd of Elephant sculptures will bring art to the streets of Leicester

Thank you for your interest in Stomp Round Leicester!

Stomp Round Leicester is coming to transform our city with an extraordinary art trail in July 2025! **Leicester's** streets, parks and open spaces will come alive with a stampede of **40** magnificent elephant sculptures, each featuring a unique design created by an amazing artist like you.

We're inviting you to get creative and join in this spectacular art trail. All **40** of our Elephant sculptures are waiting to be turned into a wonderful work of art, and we're actively seeking submissions from the local and regional arts community!

Stomp Round Leicester aims to shine a spotlight on **Leicester's** vibrant and thriving creative community and celebrate our local artists, our local community and our local hospice as **LOROS** honours its **40th** anniversary!

This isn't just about art. By participating, you'll be making an important contribution to a fantastic cause. All proceeds from the sponsorship and auction of these magnificent sculptures will go to benefit **LOROS Hospice**, providing vital support to local families with terminal illnesses.

Designs are welcome in any medium; from traditional to new media, fine art, graffiti, illustration or mosaic. Submissions will be shortlisted by an expert panel before being presented to our sponsors.

The selected artists will then be commissioned and receive **£1,000** in payment, as well as the opportunity to showcase their work to thousands of people as part of this mammoth event.

Whatever your artform, we welcome your ideas to add fun, creativity and innovation to our city.



About LOROS



We will all reach the end of our lives – and when that happens, many people need the specialist, expert, compassionate care which LOROS provides.

Our team of nurses, doctors and other healthcare professionals, work tirelessly, bringing skill, experience and dedication to every patient we care for.

Our care is as special and unique as each individual, with the aim of helping patients live the very fullest life they can, right up until their last day. Our support is free but it costs **£8.5m to deliver our services each year.**

The reality is that, one day, it may be us, or someone we know and love who urgently needs our care.

As a local charity, here to serve everyone in **Leicester, Leicestershire and Rutland**, we desperately want to be able to say 'yes' to all of these requests but the reality is, we can only provide the care local people need if we can afford it. **LOROS** is a charity and the cost of care for 4 out of every 5 of our patients is raised through donations from people like you.

You could make a huge difference to our patients and their families by being part of **Stomp Round Leicester**.

Thank you.



Registered Charity No: 506120



Registered with
**FUNDRAISING
REGULATOR**



A message from Wild in Art

It's great to be back in Leicester and to be teaming up once again with LOROS to create a new trail for the city. Our events enable thousands of people of all ages to experience art by making it part of everyday life.

They encourage exploration and drive footfall, creating a collective feeling of community and pride, and lead to a positive effect on the local economy. This new trail is a fantastic opportunity for schools and community groups to be part of a highly visible, collaborative and captivating project that will make everyone smile.

Bringing a never-before seen sculpture to the city as part of **Rocket Round Leicester** was incredibly exciting and created a big buzz. I know **LOROS** have some equally exciting plans for the Elephants and can't wait to share them with you!



Charlie Langhorne,
Managing Director
and Co-founder,
Wild in Art



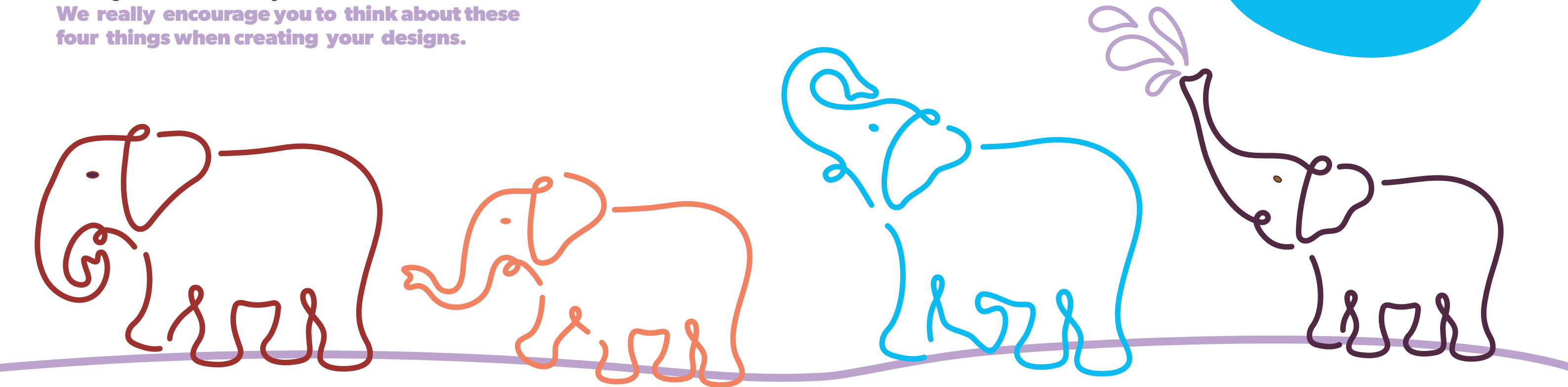
Why Elephants?

Here's a few reasons why elephants are the ideal sculpture to support LOROS Hospice.

Pack your trunk and join us on the trail!

We really encourage you to think about these four things when creating your designs.

Elephants will help us tell the stories of Leicester's diverse communities



Elephants never forget!

Elephants reflect many of our own values. They have huge memories and can recall routes and paths as well as recognise people. They are social beings – like us – and live in intergenerational family groups. Forming strong relationships, elephants are led by a matriarch, who passes on social knowledge that enables the herd to survive. They can experience joy and display grief when a member of their herd dies. For our patients and their families, memories are very important – to cherish the time we have left and provide comfort in happy recollections.

Elephant culture

Elephants hold cultural significance in many societies, and are often associated with wisdom, strength, and good luck.

Generations of children have grown up with elephants as their favourite animal thanks to brilliant book characters like Barbar and Elmer as well as cartoons and films.

Leicester's famous naturalist Sir David Attenborough finds these gentle giants endlessly fascinating, with their unexpected qualities such as their incredible hearing (through their feet!) and their ability to swim.

Reflecting Leicester's diversity

Elephants will help us tell the stories of **Leicester's** diverse communities, as the animal is important to many religions practised in the city, including Buddhism, Hinduism, Islam, Jainism, and Brahmanism. **Leicester's** celebration of Diwali is one of the biggest outside India and elephants are a significant and sacred part of the Hindu religion.

Elephants migrate and **Leicester's** rich diverse culture is also thanks to patterns of human migration.

Elephant in the room

The 'elephant in the room' is an obvious truth which no one wants to discuss. The elephant is huge but still everyone ignores it! For **LOROS Hospice** this reflects society's attitudes to death and dying. It's a difficult subject to raise and no one wants to be the first to mention it. But our doctors and nurses tell us that when people talk and make plans for the end of their lives, it really helps those that are left behind. Elephants can be the opportunity to spark these conversations amongst visitors to our sculpture trail.

How it works

Stomp Round Leicester will connect corporate, public and community partners around the city. Providing a new and uniquely creative avenue for collaboration, all while supporting LOROS; Leicester, Leicestershire and Rutland's local adult Hospice.

Businesses, community groups and education establishments are invited to sponsor a blank Elephant sculpture. New and established artists are invited to submit designs that will transform the blank Elephant with individual artworks. Design ideas are presented to sponsors who each select their favourite.

Successful artists are commissioned to apply their designs – ranging from traditional to new media, fine art to illustration, graffiti and mosaic – to the sculptures.

Schools and colleges will also join in the fun, adopting and designing their own smaller Elephant sculptures while taking part in a county-wide Learning Programme. Community groups have the opportunity to work with a regional artist to decorate an Elephant with artwork to reflect their stories. It will be displayed as part of the trail, before landing in its forever home in the local neighbourhood.

Once all the elephants are decorated, they will appear in our streets, parks and open spaces during summer next year to form a free 10-week art trail. Residents and visitors, young and old, will explore the trail using a bespoke **Stomp Round Leicester** map and mobile app.

These help them navigate around the city, discover new places and unlock exciting rewards and discounts provided by sponsors.

After entertaining and getting people outdoors, walking more, and sharing their stories, the mammoth sculptures will come together for a spectacular farewell event. It gives everyone a last chance to see the Elephants, meet some of the artists involved, and maybe choose one to bid for at the charity auction!

The legacy of **Stomp Round Leicester** continues as many of the sculptures will take centre stage at a glittering auction to raise vital funds for **LOROS Hospice**.

STOMP round Leicester

20
25

Timeline

June 20
24

Local businesses, schools and youth groups are invited to get involved.

Sept–Nov 20
24

Call goes out for artists to submit designs for the Elephant sculptures. Deadline 20th November 2024.

Jan 20
25

Art selection time!
Sponsors are invited to preview the submitted designs and choose the artwork that will make a big impression.

Mar–Apr 20
25

A herd of blank Elephants arrive in **Leicester**. The chosen artists get to work painting their incredible artworks.

Jul–Sept 20
25

The Ele-fun begins
as a stampede of giant Elephants descend upon **Leicester** for 10 weeks of trail and adventure.

Oct 20
25

The Elephants' journey comes to an end as they find their forever homes at the colossal **Stomp Round Leicester** auction, raising money for **LOROS Hospice**.

Oct 20
25

At the end of the trail all of the Sculptures are brought together for one last time as part of our Farewell Event. It gives everyone a final chance to see the Elephants, meet some of the artists involved, and maybe choose one to bid on at auction!

We are looking for a wide variety of designs and artistic styles

Be part of the Herd

Submit a design

Design submissions close on **Wednesday 20th November 2024**. Submissions will be shortlisted by a panel before the final artwork is selected by our partners and sponsors at the **Art Selection Event in January 2025**. Selected artists will be contacted by **February 2025** and be expected to bring their suggested design to life between **March – April 2025**.

We'll provide you with a sculpture and commission you to complete your artwork. We're looking for a wide variety of designs and artistic styles. You may take inspiration from the theme; please refer to pages 6&7 on why we chose elephants. You may wish to highlight the services **LOROS Hospice** offers to those in the local area. You may choose to reflect **Leicester's** rich and diverse history, culture or sporting achievements. You may create your design based on something else entirely. The vision really is yours!

Please note that preferential consideration will be given to artists based in Leicester and the Midlands region.

Due to the size of our Elephant sculptures, increasing costs of logistics and our aim to engage local artists, we can only consider transporting sculptures outside of our **Leicester** painting space in exceptional circumstances on a case-by-case basis and subject to a small delivery charge.

We're happy to accept designs from artists outside the Midlands, but we appreciate the time and effort that goes into these and want to be completely open about the submission process. So please only submit to this open call if you're prepared to travel and work from our **Leicester** painting space.

All of the stunning Elephant artworks will then be displayed for over **10 weeks** in the summer of 2025 as the Elephants **Stomp Round Leicester**. The sculptures will then be auctioned off to raise vital funds for **LOROS Hospice**, so your art will be making a big impact in more ways than one!

Designs can be submitted online at stomproundleicester.co.uk/artists

Submissions must be made by **Wednesday 20th November 2024** – we cannot accept late submissions

Artist benefits

Successful artists will...

- Receive **£1,000** upon completion and sign off of their sculpture.
- Get the opportunity to build a relationship with their Elephant sponsor.
- Showcase their work to thousands as part of a mass participation public art event.
- Have their design featured across the **Stomp Round Leicester** platform, including the app, website and trail map.
- Be part of a unique and one-of-a-kind event in **Leicester**, meet other artists and get the chance to work side by side in a communal art space.
- Support **LOROS Hospice** in raising funds to care for over **2,500** people each year.



Donna Newman
painting Stomp
Round Leicester's
hero sculpture,
Cellie-bration

Design & materials

When planning your designs, they must be appropriate for public display; the audience will be wide ranging and of all ages

- You may submit up to two designs.
- You will be required to sign our standard copyright agreement for each design.
- When planning your designs, they must be appropriate for public display; the audience will be wide ranging and of all ages. Designs that are overtly religious, political or sexual in nature will not be accepted.
- Additionally, neither corporate logos nor advertising is allowed.
- We cannot accept designs which infringe on third party Intellectual Property, i.e. recognisable brands, logos, personalities, franchises and characters etc.
- Artists may alter the basic sculpture shape but if doing so, must ensure the finished work remains structurally intact. It is recommended that only artists experienced in working with fibreglass submit designs that use this process.
- Remember that the public will touch and interact with your sculpture! Therefore, any attachments must be robust and able to withstand this handling (including, potentially, the weight of an adult), not be likely to cause any injury, and must be durable in an outdoor environment.

- Subject to availability, a painting space will be provided for you to create your Elephant. Should you wish to paint it in your own studio you will be responsible for collection and delivery. Please be aware of the size and weight of the sculpture when considering this option (including any fixing brackets which can stand proud of the sculpture).
- While we welcome all art forms, experience has taught us that collage and/or sticking paper or paper-based products onto the sculpture does not prove as effective as painting or mosaics.
- Please consider this before submitting your design and be aware that most of the sculptures will be positioned outside for 10 weeks exposed to the British weather.
- When placed on the streets, each sculpture is bolted to a concrete plinth using fixings. Artists must keep the base area of the sculpture clear of any attachments.
- Artist materials are not provided.
- The use of acrylic or emulsion paint is recommended, although artificial resin paint or two component paint can also be used to paint or spray a design. To complete your sculpture, it must be finished with a waterproof, non-yellowing varnish which will be provided.
- Artists will not be responsible for placing their sculptures on the streets or collecting them once the trail has closed. We may offer artists first refusal to make any refurbishments or repairs during or after the event. If an artist is unavailable, another suitably experienced artist will carry out this work.

Ready to join the herd?

Please download the sculpture template at stomproundleicester.co.uk/artists to create your design(s).

- Once you have completed your design(s), please complete the Artist Submission Form [HERE](#) or visit the website stomproundleicester.co.uk/artists.
- Once you have completed the form, please email your completed design(s) to stomproundleicester@loros.co.uk, with each file clearly named to correspond with your design name(s).
- Submissions must be completed online by midnight Wednesday 20th November 2024.
- Designs must be in PDF, JPG or PNG format and high resolution.
- Attachments must not exceed a file size of 2MB.
- LOROS is not able to return any materials submitted.

Any questions?

Please email stomproundleicester@loros.co.uk



Height, to top of trunk: **1,600mm**
Length, inc. fixing brackets: **2,200mm**
Width, inc. fixing brackets: **800mm**
Weight: **40kg**

Note: although our sculptures are manufactured from a single design molding there may be minor variations to the dimensions particularly the weight.

Terms & Conditions

1. The project is open to all artists, amateur or professional. You must be aged 18 or over and living in the UK.
2. You may submit up to two applications.
3. All terms and conditions in this application form a part of the agreement between you, LOROS and Wild In Art in connection with Stomp Round Leicester and by submitting your work you are agreeing to be bound by all terms and conditions in this application form.
4. You must be the sole author and owner of all intellectual property rights of the work entered, or if the work is not your own in full, you must have sole permission in writing from the copyright owner/s to use their work. Source material or proof of permission in use of another person's work must be made available on request by the selection panel. LOROS and Wild In Art do not accept liability in the publication of any reproduced art.
5. The design must represent a piece of work that you have the ability to reproduce on a 3D sculpture.
6. Any additions or modifications to the sculpture must be sufficiently strong to maintain structural integrity of the sculpture and must not cause injury.
7. To enter, the work must be received by the closing date of midnight on Wednesday 20th November 2024. All entries must be accompanied by a completed artist submission form.
8. No allowances will be made for work that arrives later than the deadline.
9. By completing the artist submission form and submitting your designs, you consent that all data provided by you may be used by LOROS and Wild In Art for marketing, communications and evaluation purposes unless you opt out in writing. We don't and never will sell or pass on any of your details to another organisation for them to use for their own purposes. We may, however, use third party organisations to help deliver services on our behalf, for example, distributing our email newsletters or feedback questionnaires, or managing participant lists for our events. At all times we will ensure that we look after your details responsibly and that any organisations using your information on our behalf do the same. For more information, please see LOROS' Privacy Policy at loros.co.uk/our-policies/privacy-policy
10. Copyright and all other IP Rights in the design belong to and remain with the artist. However, subject to LOROS paying all amounts due to the artist under any final commissioning contract, the artist grants to LOROS and Wild In Art an irrevocable royalty free licence to use the completed artwork for purposes in connection with the event, Stomp Round Leicester.
11. You consent to the use of your work, name and photograph in any promotional material carried out by LOROS and Wild In Art without any further compensation.
12. Your work will be reviewed and shortlisted by LOROS and a panel of suitably experienced and impartial professionals including a representative from Wild In Art, prior to being shown to the event sponsors.
13. Work will be commissioned following selection and or confirmation by the event sponsors. The decision on all matters relating to the work selected to be used is final. No further correspondence will be entered in to.
14. Upon commissioning, LOROS will enter a separate service level agreement with you to include an agreed schedule and the terms and conditions of engagement.
15. LOROS will provide the sculpture at no charge to you. Cost of materials is your responsibility except for varnish, which will be provided. Unless otherwise agreed by both parties in writing.
16. If you are not able to paint the sculpture in a provided painting space, we will work with you in order to co-ordinate and manage the safe and secure transportation of the sculpture in the most cost-effective way. Artists may be expected to pay all or a proportion of delivery charges to and from the event storage. This is at the discretion of the event partner, and should finalised before any commission is confirmed. In the unlikely event that we cannot provide a painting space, the costs of transportation of the sculpture will be discussed on a case-by-case basis.
17. You will provide a list of artist materials – specifically paint, brand and colours used in the application on the sculpture.
18. LOROS reserves the right to withhold any fee payable to you in connection with the event if in its sole opinion the quality of the finished work provided falls below that which can be reasonably expected for public display and/or is substantially different from the design submitted.
19. The sculpture remains at all times the property of LOROS and must be returned in good order.
20. If the sculpture is returned unfinished by you or deemed irreparable due to damage while in your possession, you shall be charged the full replacement cost of said sculpture.
21. LOROS will award commissioned artists with an honorarium of £1,000 +VAT (if applicable). This will be paid on completion of the finished artwork, subject to sign off, and all relevant paperwork. Payment will be made within 28 working days of receipt of invoice. LOROS will consider, at our discretion, staged payments on a case-by-case basis.
22. LOROS and Wild In Art may from time to time produce facsimiles of the completed sculpture in both 2D and 3D form, excluding figurines. For the avoidance of doubt, any agreement reached in connection with any facsimile of your design should include any consideration to be paid to you by LOROS and require transfer of rights to LOROS.
23. Subject at all times to your agreement, LOROS and Wild In Art may produce a figurine of the completed sculpture as part of the event merchandise. If your sculpture is selected to be a figurine, this will be subject to a separate figurine contract and include a royalty fee.
24. Following the event, the sculpture will be auctioned to raise money for LOROS. LOROS will, where practicable, try to offer artists first refusal to undertake repair and maintenance work should the applicable sculpture require it, but in most instances suitably experienced local Artists will be commissioned separately by LOROS to complete any agreed maintenance and repairs.
25. By entering your work for consideration to be selected to be used in the event and for eligibility for payment of the honorarium you warrant that you have all required rights and consents to submit the work and allow LOROS and Wild In Art to use the work in connection with LOROS. You also agree to grant an irrevocable royalty-free licence to LOROS and Wild In Art and to use the completed work for the purposes described elsewhere connected with the event.

Stomp Round LEICESTER



-  StompRoundLeicester
-  @stomprounleicester
-  @LOROSHospice
-  @stomprounleicester
-  LOROS Hospice



Thank you.
We can't wait to see your designs!

StompRoundLeicester.co.uk

A **Wild in Art** event brought
to you by **LOROS Hospice**



Registered Charity No: 506120

Kindly
designed by:



stbdesign.com

